



Australian Government

Department of Immigration
and Border Protection

The Student Visa

Subclass 500

Session plan

- Simplified Student Visa Framework
- Student visa requirements
- Question and answer

A simplified student visa framework

Single student visa subclass (subclass 500)

Online lodgement

Client service tool – country and provider risk model

Streamlined evidentiary requirements

(Documentary evidence of English and financial capacity not generally required)

Regular evidentiary requirements

(Documentary evidence of English and financial capacity generally required)

Core student visa requirements

Genuine Temporary Entrant

Enrolment

Health and Character

Welfare arrangements (where applicable)

Overseas health insurance

Immigration risk methodology

- Rate of offshore refusals – 10% weighting
- Rate of offshore fraud refusals – 40%
- Rate of students becoming unlawful – 15%
- Rate of visa cancellation – 25%
- Rate of protection visa lodgement – 10%

Reporting portal

	Data Set			Risk indicators (actual numbers and rates)										Risk Index*	Risk Rating
	Col 1	Col 2	Col 3	Col 4	Col 5	Col 6	Col 7	Col 8	Col 9	Col 10	Col 11	Col 12	Col 13	Col 14	Col 15
Country of Citizenship	Number of Active Student visas (in effect)	The number of student visa applications granted or refused where the applicant lodged overseas	The number of student visas that are due to expire in the reporting period	The number of student visas that were cancelled	Rate of Cancellations (25%)	Number of student visa applications refused because of fraud where the applicant lodged overseas	Rate of Refusals by Fraud where the applicant lodged overseas (40%)	Number of student visa applications refused (excluding fraud) where the applicant lodged overseas	Rate of Refusals (excluding fraud) where the applicant lodged overseas (10%)	Number of Protection Visa applications where previous visa held was a student visa	Rate of Subsequent Protection Visa Applications applications (10%)	Number of Student unlawful non-citizens	Rate of Student unlawful non-citizens (15%)	Risk Index	Risk Index
Bangladesh	54	18	14	0	0.00	0	0.00	0	0.00	1	0.71	0	0.00		N/a
Canada	56	30	28	0	0.00	0	0.00	0	0.00	0	0.00	0	0.00		N/a
Chile	30	10	8	0	0.00	0	0.00	0	0.00	0	0.00	0	0.00		N/a
China, Peoples Republic Of	4,624	2,133	1,670	6	0.07	0	0.00	2	0.01	9	0.05	4	0.04		0.17



Student visa requirements

Core requirements

- Applying
- The Genuine Temporary Entrant requirement
- Health and Character
- Overseas health insurance
- Packaging arrangements

The Financial requirement

- Further evidence only required for 'regular' students
- Three options to meet financial requirement:
 - 12 months evidence of living, tuition, travel and study costs
 - Annual income
 - AASES form
- Funds must be genuinely available

The Genuine Access requirement

- Funds must be genuinely available to support student while in Australia
- Department may consider factors including:
 - Relationship of sponsor
 - Income, assets and employment of sponsor
 - Previous visa history

English language requirements

- Documentary evidence only required for 'regular' students
- Two options to meet English requirement:
 - Evidence of acceptable test score
 - Exemption category

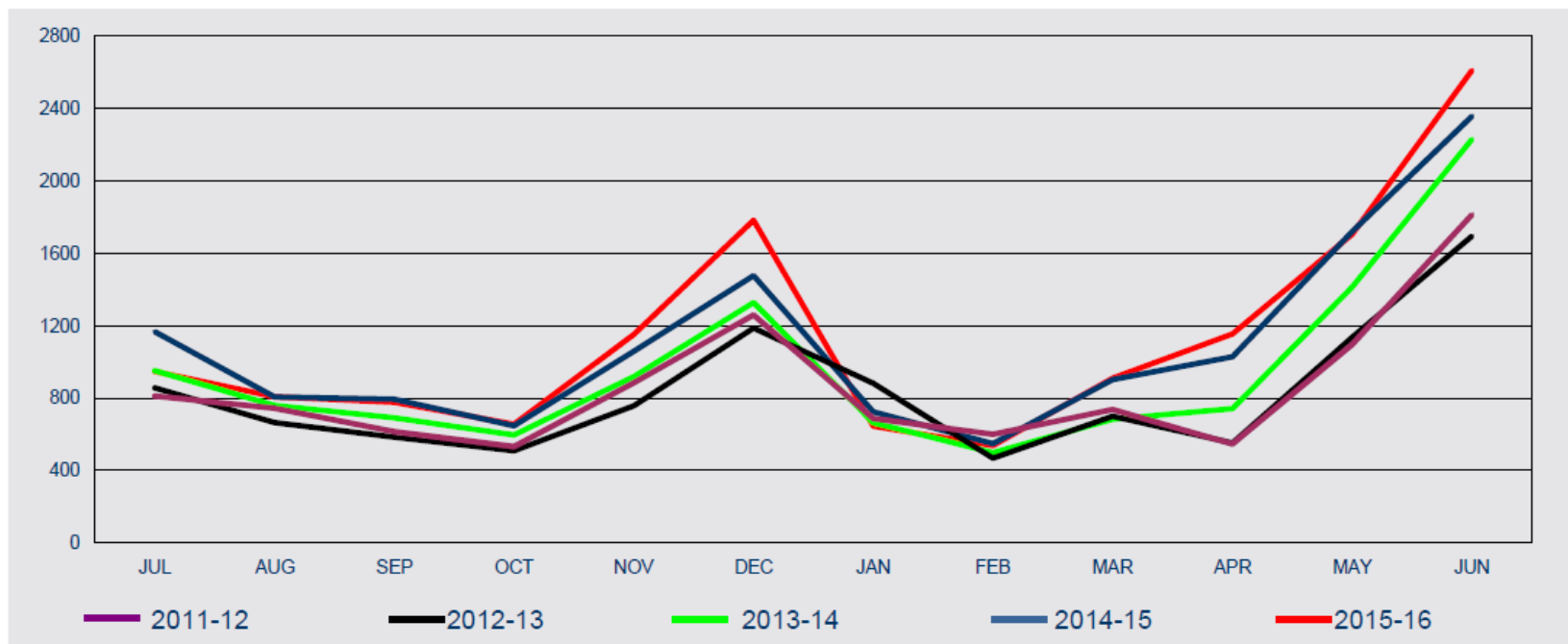
Changing courses

- Student must remain enrolled in a course at the same or higher AQF level for which the visa has been granted (unless changing from AQF 10 to AQF 9)
- Implemented through visa condition 8202



Sneak peak at data

Lodgements S/c 571



Top 3 nationalities granted outside of Australia

Citizenship Country	2014-15 to 30/06/15	2015-16 to 30/06/16	% Change from 2014-15	2015-16 as % of Total
China, Peoples Republic of (excl SARs)	5168	4822	-6.7%	44.0%
Germany, Fed Republic of	1002	1006	0.4%	9.2%
Vietnam	628	844	34.4%	7.7%

More information

- DIBP website www.border.gov.au

Includes:

Pages on SSVF

Information for students

Information for education providers

Detail on the GTE requirement