



All Cultures Weave

INTERNATIONAL
STUDENT
ARTWORK
INITIATIVE

Jackie Taylor
Melanie Gibson
Gillean Shaw
Caelli Jo Brooker



THE UNIVERSITY OF
NEWCASTLE
AUSTRALIA

PARTNERSHIPS + COLLABORATIONS

This project was funded by Study NSW in partnership with the University of Newcastle, and was supported by the Office of the Deputy Vice-Chancellor (Academic), University Galleries, the Wollotuka Institute for Indigenous Education and Research, and Student Central.



Study NSW



THE UNIVERSITY OF
NEWCASTLE
AUSTRALIA

**OFFICE OF
THE DEPUTY
VICE-CHANCELLOR
(ACADEMIC)**



**UNIVERSITY
GALLERIES**

THE
WOLLOTUKA
INSTITUTE

**STUDENT
CENTRAL**

The background of the slide is a complex, repeating pattern of microscopic structures, likely biological or mineral in origin, rendered in a dark red color. The structures are intricate, with many showing concentric or radial patterns. A semi-transparent red circle is positioned on the left side of the slide, partially overlapping the text.

Introduction

background to the project



- International student welcome to the City of Newcastle
- Post COVID-19 pandemic
- Collaboration with Study NSW to create a meaningful and inclusive welcome
- Taskforce initiation

Jackie Taylor

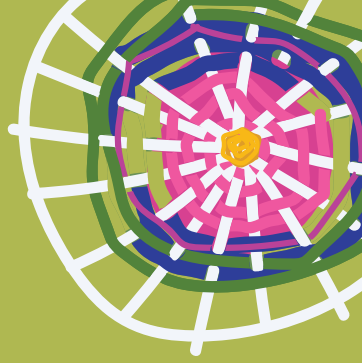
Academic Division General Manager

OFFICE OF THE DEPUTY VICE-CHANCELLOR (ACADEMIC)



The Collaborative Brief

many hands, many cultures



- Participatory multicultural Workshop approach
- Workshop precedents and Galleries' collaborative model
- The International Student Welcome event
- The collaborative workshop brief

Gillean Shaw
Art Curator
UNIVERSITY GALLERIES









Yarning and Making

sharing First Nations approaches



- Yarning and making together
- Sharing cultural practices

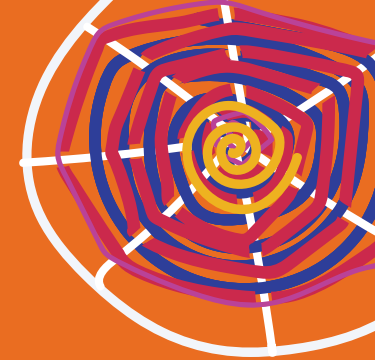
Dr Caelli Jo Brooker
Research Capability Development Coordinator
THE WOLLOTUKA INSTITUTE





Development and Delivery

planning and implementing the project



- Project Management
- Collaborating post International Student Workshop
- Engaging International Student Ambassadors

Melanie Gibson

Project Communications and Strategy Officer
OFFICE OF THE DEPUTY VICE-CHANCELLOR (ACADEMIC)

INTERNATIONAL STUDENT WELCOME EVENT









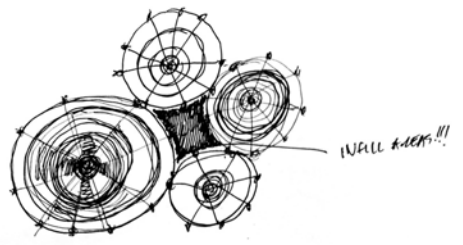
The Process

sharing culture and making together

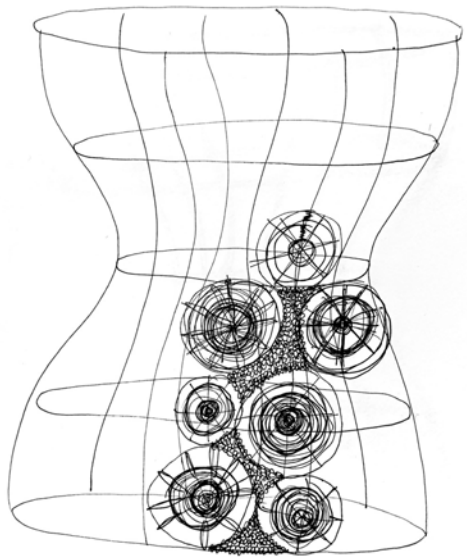


- Interpretation and inspiration
- Design / sketches / prototyping
- Process of bringing workshop weavings together

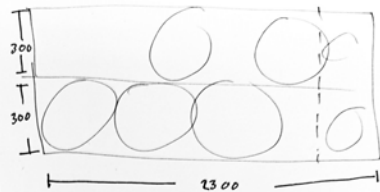
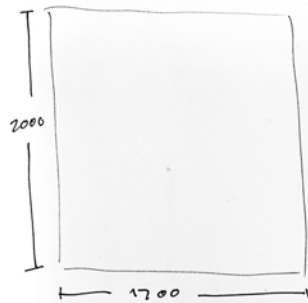
Dr Caelli Jo Brooker
Research Capability Development Coordinator
THE WOLLOTUKA INSTITUTE



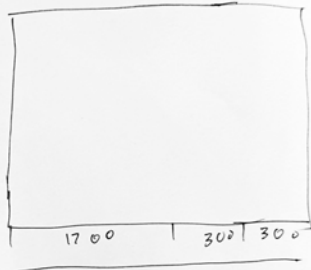
IN ALL DIRECTIONS!!!



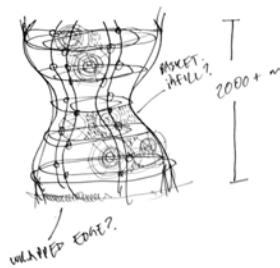
PATTERN



700

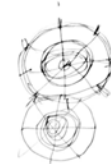


2300



UNLAPPED EDGE?

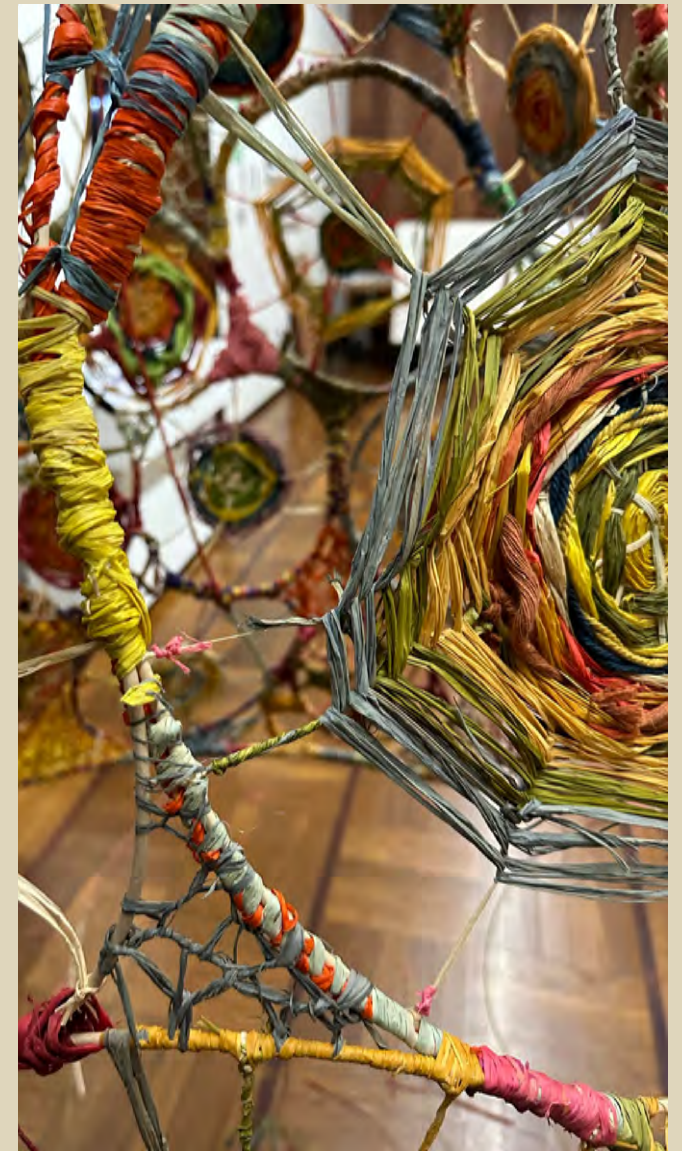
2000 + m

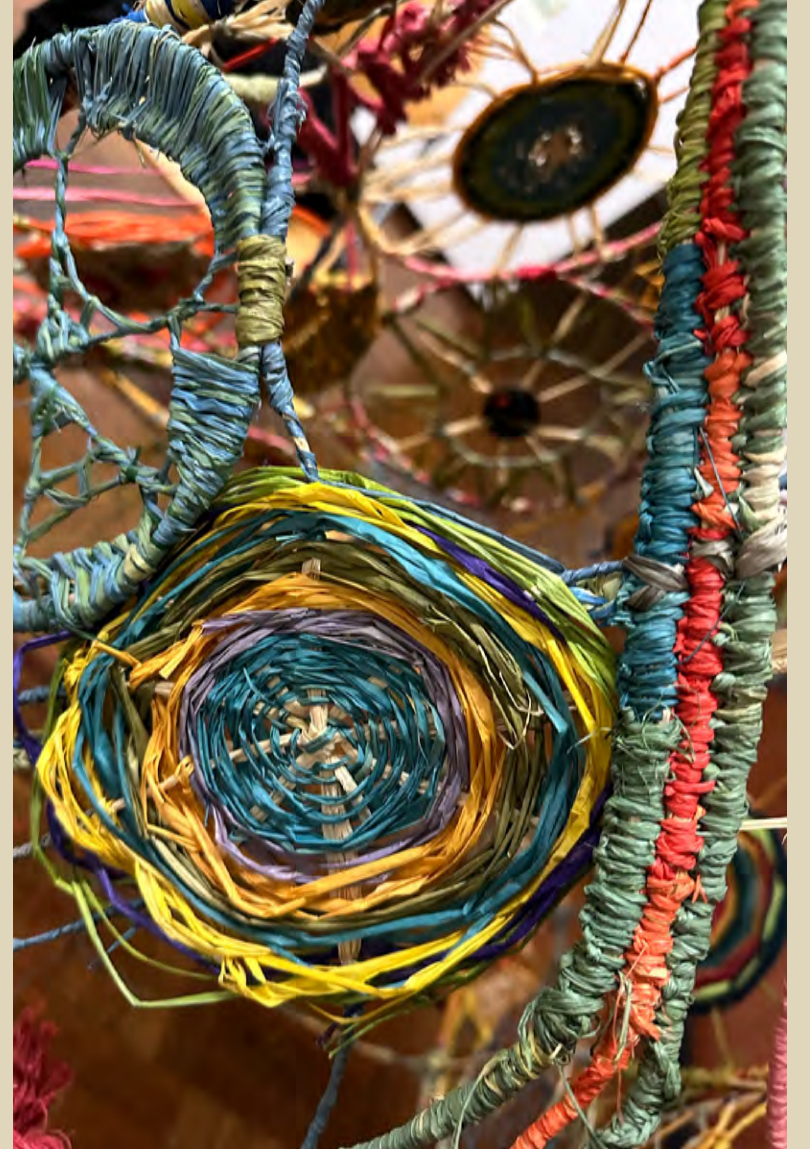


NETTING INFLECT



STRUCTURE









The Results

a collaborative weaving installation



- The final collaborative artwork
- Installing the work
- Planning the launch event in collaboration with Study NSW and the City of Newcastle

Gillean Shaw
Art Curator
UNIVERSITY GALLERIES



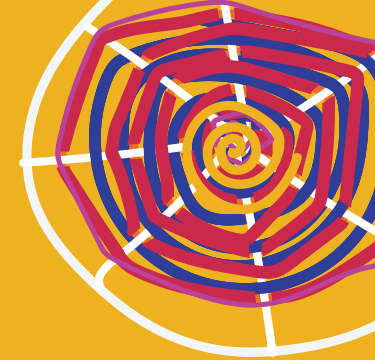






Project Futures

next steps and looking forward



The *All Cultures Weave* sculpture is a unique permanent fixture at the University City Campus and will be a place for Alum international students to return to as a reminder of their time in Newcastle.

The University of Newcastle and Study NSW have an ongoing commitment to expand this program to include future incoming international student cohorts in 2024.

Melanie Gibson

Project Communications and Strategy Officer

OFFICE OF THE DEPUTY VICE-CHANCELLOR (ACADEMIC)







**Thank
You.**

gifts to share