



ISANA/ANZASSA 2017 ANNUAL CONFERENCE

NSW Government collaborates with international education stakeholders to enhance student experience

**Robin Daroczy, Assistant Project Officer, StudyNSW, NSW Trade & Investment**

# StudyNSW supporting international students in NSW

- Set up in July 2014
- Unit within NSW Department of Industry
- A coordinating body for international education in NSW
- 1# recommendation from the *NSW International Education and Research Industry Action Plan* (September 2012)
- **Key focus on the student experience encompassing student arrival, safety, employability and working rights**

Operating model:

- **Core projects:** fully funded by NSW Government through StudyNSW
- **Partner projects:** co-funded with industry



# StudyNSW Partner Projects

StudyNSW Partner Projects are jointly-funded projects delivered in partnership with the international education sector in NSW which are:

- Strategic
- Innovative
- Demonstrate a strong benefit to the international education sector
- Focus on gaps not currently addressed in the sector

# Application process

- Evaluated by independent panel
- Endorsement by NSW International Education Advisory Board

## Key dates

- Applications open April
- Closing date 30 June
- Notification of outcome to applicants mid-September

# Assessment criteria

- supports NSW State Priorities to grow the economy (10% weighting);
- adds value to enhance delivery of StudyNSW four core functions through industry collaboration and input (40% weighting);
- generates maximum impact within identified resources and effectively manages risk (25% weighting); and
- provides benefits to more than one entity, and where possible, more than one education sector (e.g. schools, vocational education and training, higher education, English language intensive courses for overseas students) (25% weighting).

# Improving employability: NSW Global Scope



**A work-integrated learning (WIL) program, giving students the chance to come up with solutions to real-life problems facing NSW Government agencies, NGOs and private sector companies**

- Successful pilot program ran in 2016, reaching around 1,000 students in 2017
- Partnership between NSW Government, EduTech start-up Intersective and consultancy firm EY
- Fairfax Media, Commonwealth Bank, CSIRO, Chartered Accountants Australia & New Zealand
- Consultancy-based projects
- 9 NSW universities
- 35 organisations





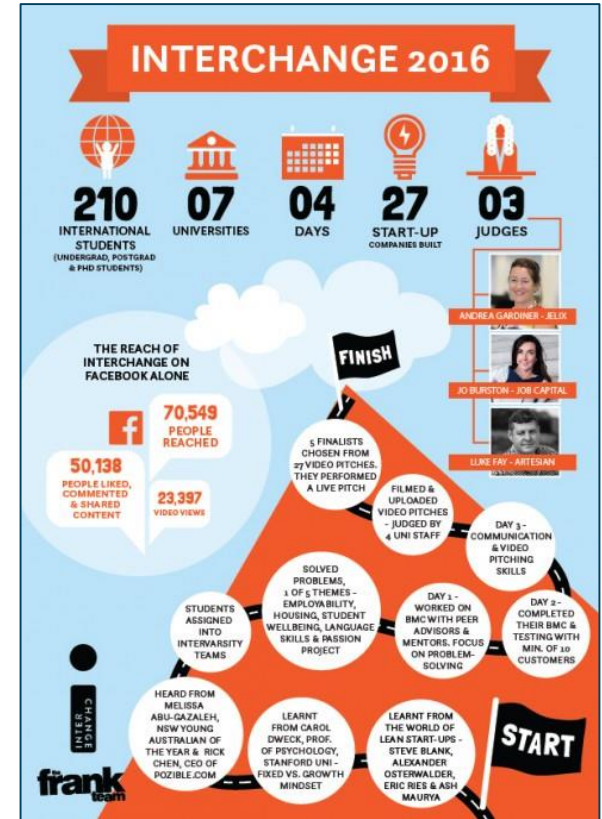
# International Hub: referral service for international student health and wellbeing programs in New England

- Partnership with University of New England and Bupa
- Establish International Hub referral service with a range of health and wellbeing programs for all international students in the New England region
- Help integrate them along with their families into the local community
- Including free English language classes, an international women's gym and swimming lessons, Positive Parenting Program





# Interchange 3.0 – Fostering entrepreneurialism and innovation



[Interchange program video](#)



# Next steps

- Visit [www.sydney.sydney](http://www.sydney.sydney) and search 'Partner Projects'
- Review key documents
  - NSW International Education and Research Action Plan
  - StudyNSW International Education Strategy
  - Partner Project Guidelines
- Start planning early
- This conference is a great opportunity to identify potential project partners

# Stay connected with StudyNSW

 Study.Sydney

 StudyNSW

 StudyNSW

 Study.Sydney

 Subscribe to the  
StudyNSW newsletter

 [study.sydney@industry.nsw.gov.au](mailto:study.sydney@industry.nsw.gov.au)



[www.study.sydney](http://www.study.sydney)