



gen **in**

# student innovation challenge

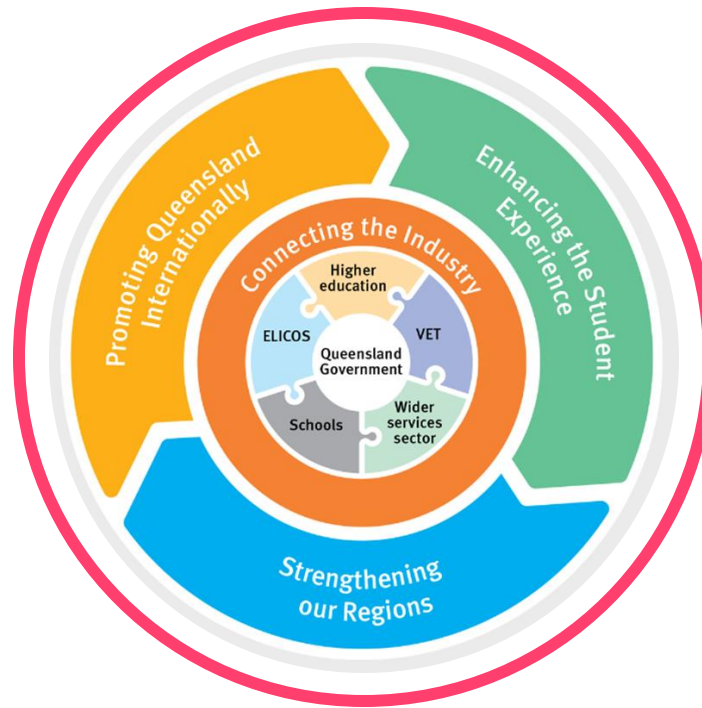
Study  
Queensland  
Start here. Go anywhere



gen **in**

# the gen[in] project

# WHERE DID WE COME FROM?

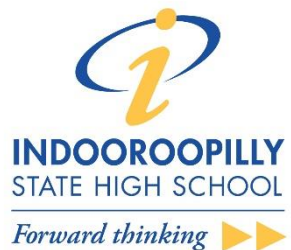


MAY 2017



SEP 2017

# THE CONSORTIUM

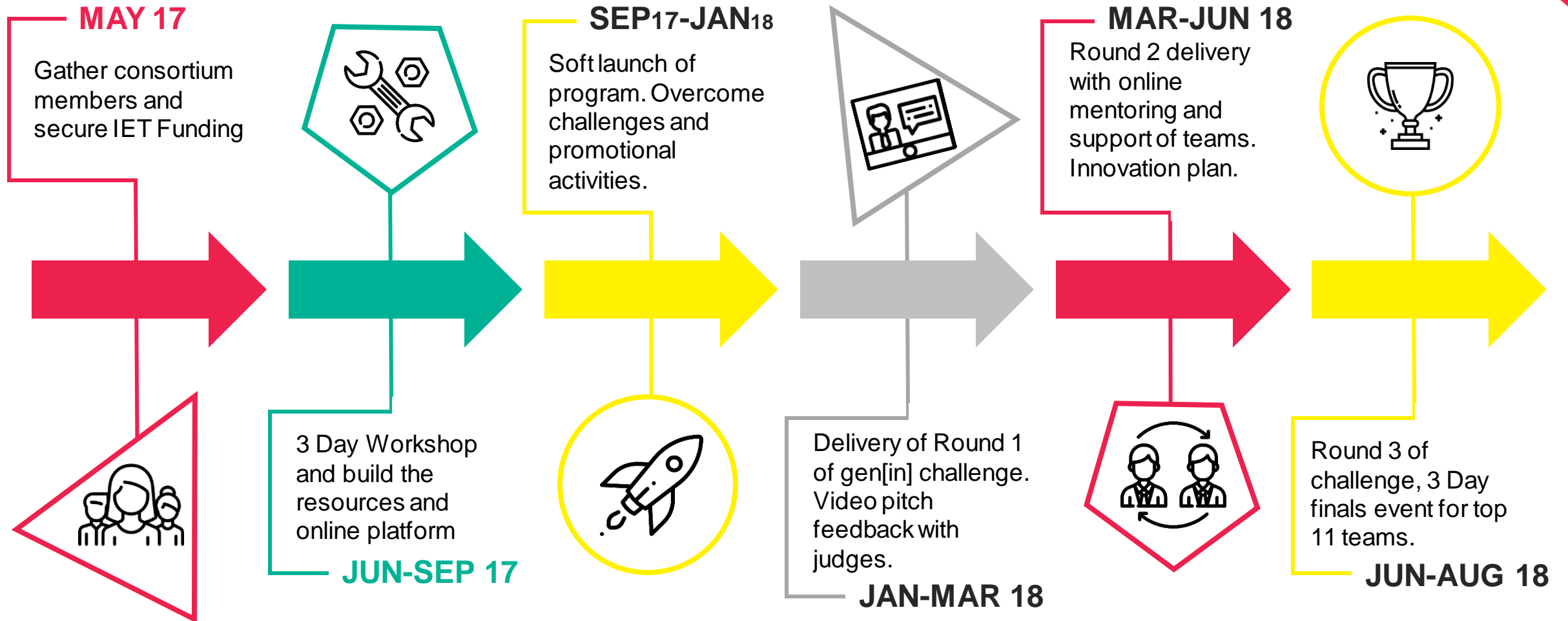


# the gen[in] challenge



<https://youtu.be/GYYdnXMolQU>

# HOW DID WE GET HERE?



# THE MINDSET AND THE SKILLS

## The Entrepreneurial Mindset



### MINDSET

#### Opportunity-Driven



#### Collaborative



#### Decisive



#### Willing



#### Risk Taking



### SKILLS

- Intellectual Curiosity (IC)
- Design Thinking (DT)
- Creative Thinking (CT)
- Agile (A)

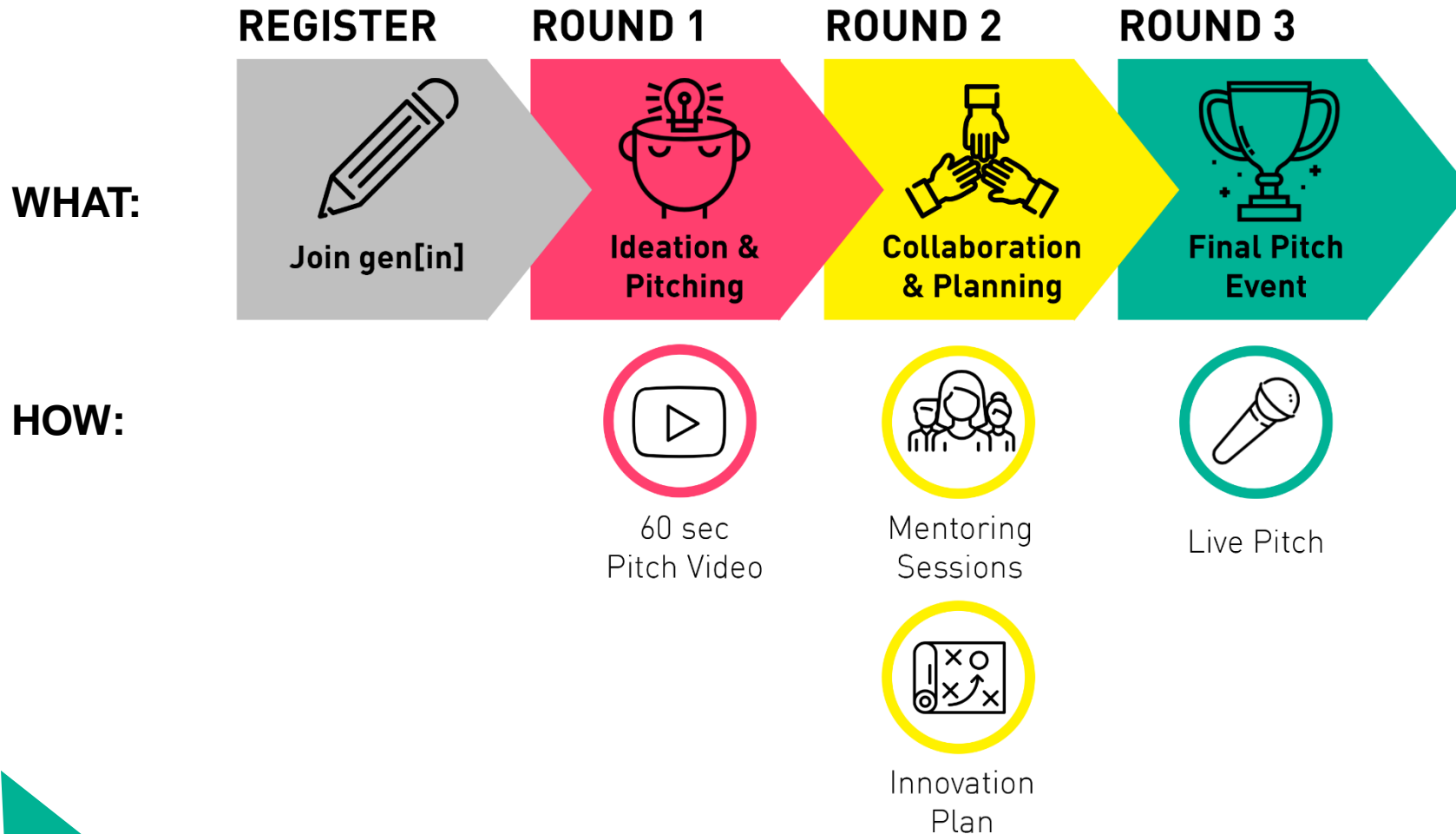
- Social Collaboration (SC)
- Empathy/Compassion (E/C)
- User-centred Design (UCD)
- Self Knowledge (SK)

- Initiative (I)
- Research (R)
- Execution (E)
- Incisive (In)

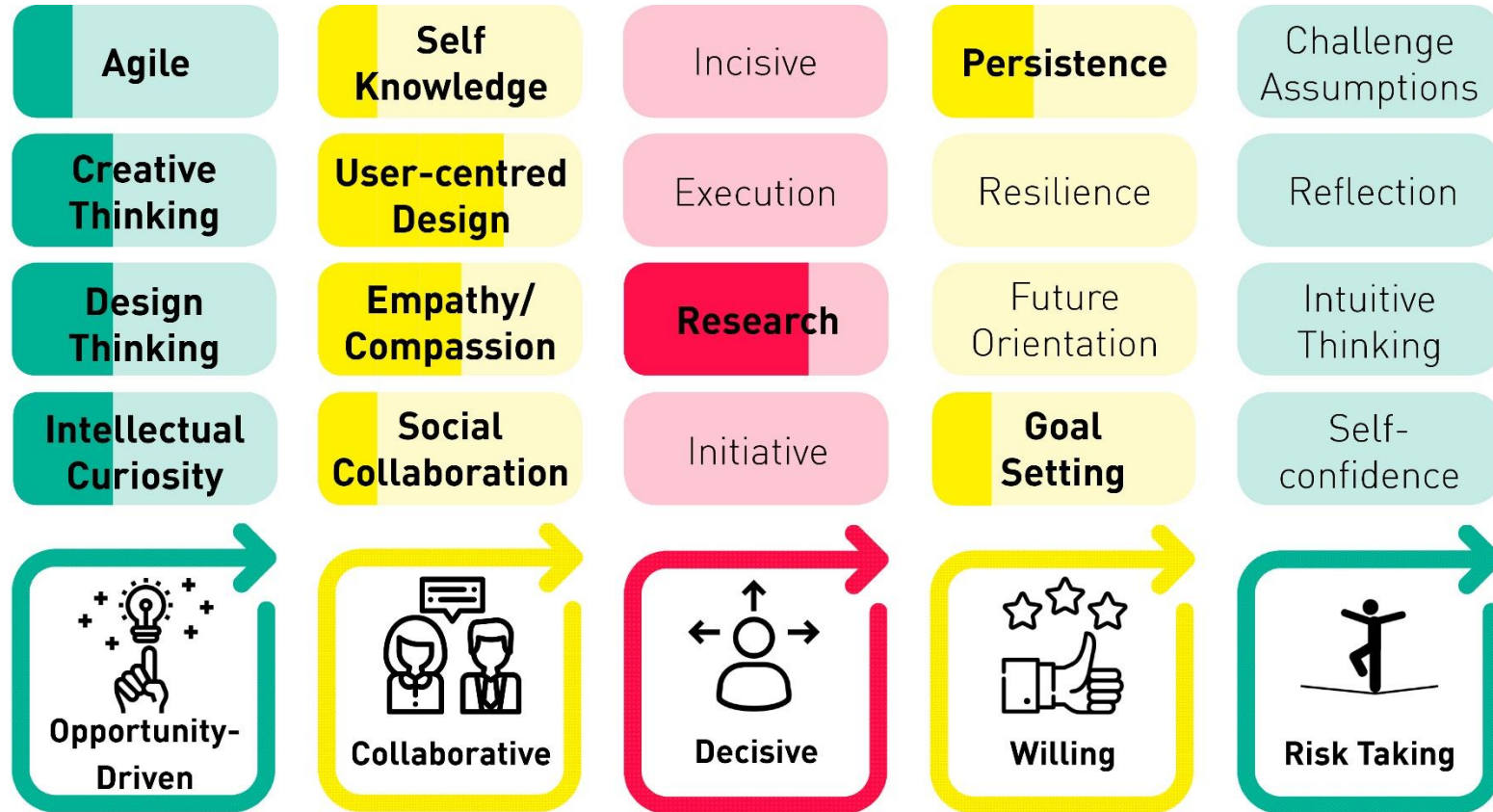
- Goal Setting (GS)
- Future Orientation (FO)
- Resilience (RE)
- Persistence (PE)

- Self-confidence (S-C)
- Intuitive Thinking (IT)
- Reflection (RF)
- Challenge Assumptions (CA)

# THE GEN[IN] STUDENT JOURNEY



# TRACKING THE MINDSET AND SKILLS



# BENEFITS OF THE CHALLENGE



**MAKE LIFELING  
CONNECTIONS**



**BUILD REAL  
WORLD SKILLS**



**GAIN ACCES  
TO MENTORS**



**CREATE GLOBAL  
PARTNERSHIPS**



**GAIN REAL  
WORLD  
EXPERIENCE**



**HAVE  
SUPPORT FROM  
QLDs BEST**



**A CHANCE  
TO WIN A SHARE  
OF \$15K**

# BUILDING GEN[IN]



**kick start your idea!**  
Inside you'll find some design tools to help you on your way. You'll have a fantastic idea in no time. Let's go!

**WORKING IN A TEAM**  
Working in a team isn't always easy but is important for your collective success.  
Collaborating within a team doesn't necessarily come naturally because team members' perspectives can become competitive rather than complementary.  
This can lead to disagreements about little things like the colour of a font or big things like the problem you are trying to solve.  
To identify whether you are working effectively in a team, work on completing the team 'health check'.  
The health check on the right has been adapted by from the Atlassian 'Team Feedback Project Team Health Member'. This resource can be accessed here: <https://www.atlassian.com/team-feedback/health-check>.

Team Attribute*	Date:	Date:	Date:
Leader			
Balanced Team			
Shared Understanding			
Wise and Metrics			
Proof of Concept			
One-Pager			
Managed Dependencies			
Velocity (Progress)			

**STEP 1**  
Split your team into two (2) groups and decide for each team attribute whether you would score it green, amber or red. Then place a green, amber or red score in the table for that attribute.

**STEP 2**  
Bring a...

**WRITING YOUR INNOVATION PLAN**  
Having a plan for your idea is important, no matter what your goals may be.  
Now that you have mapped out all the major components of your idea, it is time to pull it together in an innovation plan!  
With simpler "to-the-point" methods becoming the norm, many entrepreneurs are turning to 1-2 page plans to get their ideas off the ground.  
In this final step for Round 2, we are going to ask you to write your very own 2-page Innovation Plan for your idea. This will allow you and your team to work through the finer details of your idea, making it as awesome as it can be.  
To complete your innovation plan simply:  
1. [Download the Innovation Plan Template](#)  
2. Fill out the details of your idea in the plan  
3. Submit your Innovation Plan to the gen[in] Project Manager, Megan, at [muhor75@eq.edu.au](mailto:muhor75@eq.edu.au) for consideration from our judging panel (for finals)

**Little Tokyo Two Resource**  
Little Tokyo Two has shared with gen[in] participants their resources on how to Create a Business Plan. [You can access this resource here.](#)

**About The Contributor**  
Jack is the CEO of [Little Tokyo Two](#), a membership based community of innovative people who want to grow their dream business. So far, Jack and the Little Tokyo Two team have helped over 100 businesses launch! Now, Jack wants to share his wealth of start-up knowledge with you so you can write an incredible innovation plan!

**gen[in]**

Hi Flynn  
Welcome to gen[in]!  
We are so excited that you have decided to take on the gen[in] student innovation challenge.  
By joining the gen[in] community, you will now get access to the best entrepreneurial minds Queensland has to offer as well as a series of useful resources.  
We will walk you through your innovation journey, covering a wide range of topics including ideation, pitching, collaboration (and much, much more!).  
The way this works is we will send you emails with bite-size pieces of information about innovation and entrepreneurship, guiding you through the different elements of being a young innovator.  
As you go through this journey, I will be working alongside you to answer any questions you may have. Since I will be working with you, I want to take a moment to properly introduce myself (via video!).

# DELIVERING GEN[IN]



GenIn  
Published by Megan Short (1) · January 22 · 🌐

Registrations for Queensland's first-ever globally focused student innovation challenge gen[in] have officially opened! 🎉👏👏

So whether you have an idea or just want to build your skills for the future make sure you register - It's completely free!

Register at: [www.genin.qld.edu.au](http://www.genin.qld.edu.au)... See More



**REGISTER NOW**  
#geninchallenge

Study Queensland | TIQ | gen[in]

GenIn  
Education

Apply Now



# GEN[IN] MENTORING

“Mentoring the teams was such a wonderful experience, something that I would love to do again.”



**Yasmin**  
World's Biggest Garage Sale



**Jonathan**  
FutureWe

Being a mentor was a something I didn't take lightly - it was obvious as we chatted that despite being new to the entrepreneur world, the students I worked with were deadly serious about the problems they were solving. ....Overall it was a fantastic, incredible experience.

Jonathan Nalder - Mentor

# OUR ENGAGEMENT RESULTS

**150,000+**

Young people across Queensland, social campaigns



Students have submitted an EOI to join the challenge

**344**

**145**

Students officially registered for the challenge (Round 1). 42% conversion.



Students submitted video pitch and progressed to Round 2. 72% conversion. 50+ teams.

**105**

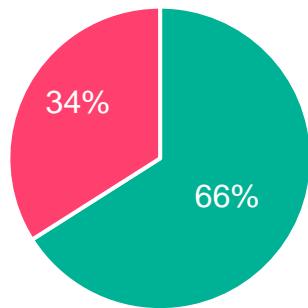
**21**

Student finalists representing the top 11 teams will pitch at the finals.



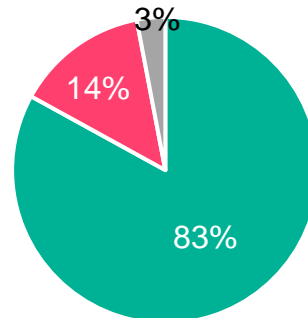
# GEN[IN] DEMOGRAPHICS

Students by Team/Individual



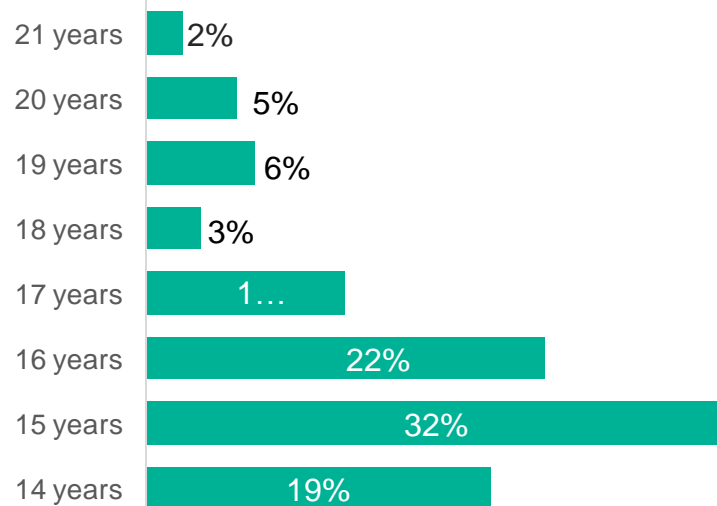
■ Teams ■ Individuals

Students by Institution

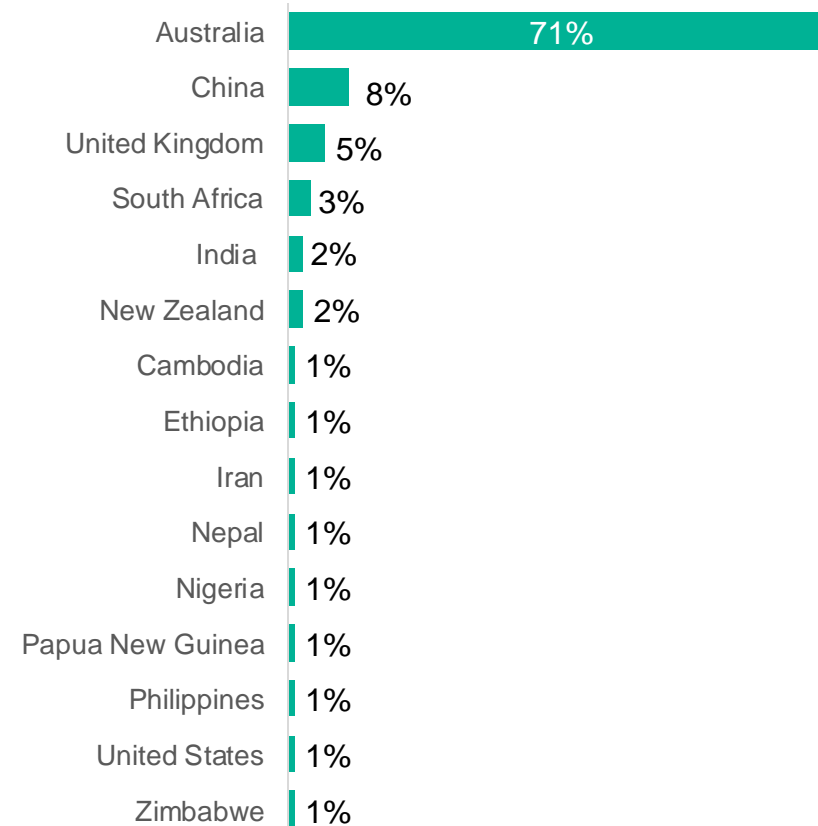


■ High School ■ University ■ Other

Students by Age



Students by Country of Origin



# 61 Homestay

[www.61homestay.com](http://www.61homestay.com)

— Your Home  
Away From  
Home —

## MEET JACK



**Study**  
Queensland  
Start here. Go anywhere



**gen in**

# JACK'S GEN[IN] JOURNEY

1



Workshop and Identified the Problem with Homestay

2



Created the idea +61 Homestay an app the works like AirBnB

3



Won the top prize of \$4,000 at the gen[in] finals

# OUR IMPACT

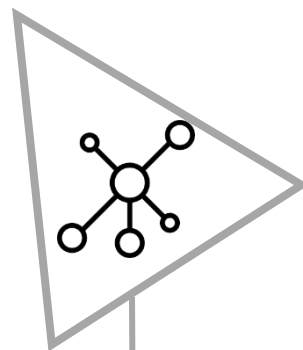
**93%**

Of participants were happy with the overall gen[in] experience.



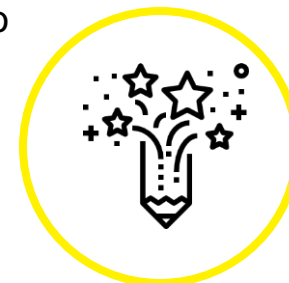
**67%**

Of participants felt they developed their Confidence skills by taking part in the challenge.



**73%**

Improved their ability to understand problems from the POV of local community and develop innovative ideas to solve them.



Of participants felt they developed their Creative Thinking skills (73% also felt they also developed their Design Thinking skills).

**80%**



Of participants felt they had developed their networking skills as part of the challenge,

**66%**



Of students felt it improved their ability to have a go at something new.

**87%**

# WHAT'S NEXT?



## BIGGER AND BETTER

Increase registrations, deliver state-wide hackathon event, more international involvement.



## BUILD ON PARTNERSHIPS

Create more regional and then global connections.



## SUSTAINABLE BUSINESS MODEL

Gain corporate sponsors, ensure future funding sustainability.



# QUESTIONS?

**Study**  
Queensland  
Start here. Go anywhere



**gen in**

# CONTACT

## MEGAN SHORT



Project Manager, gen[in]

[mshor75@eq.edu.au](mailto:mshor75@eq.edu.au)

0459 866 960

**Study**  
Queensland  
Start here. Go anywhere



**gen** **in**