

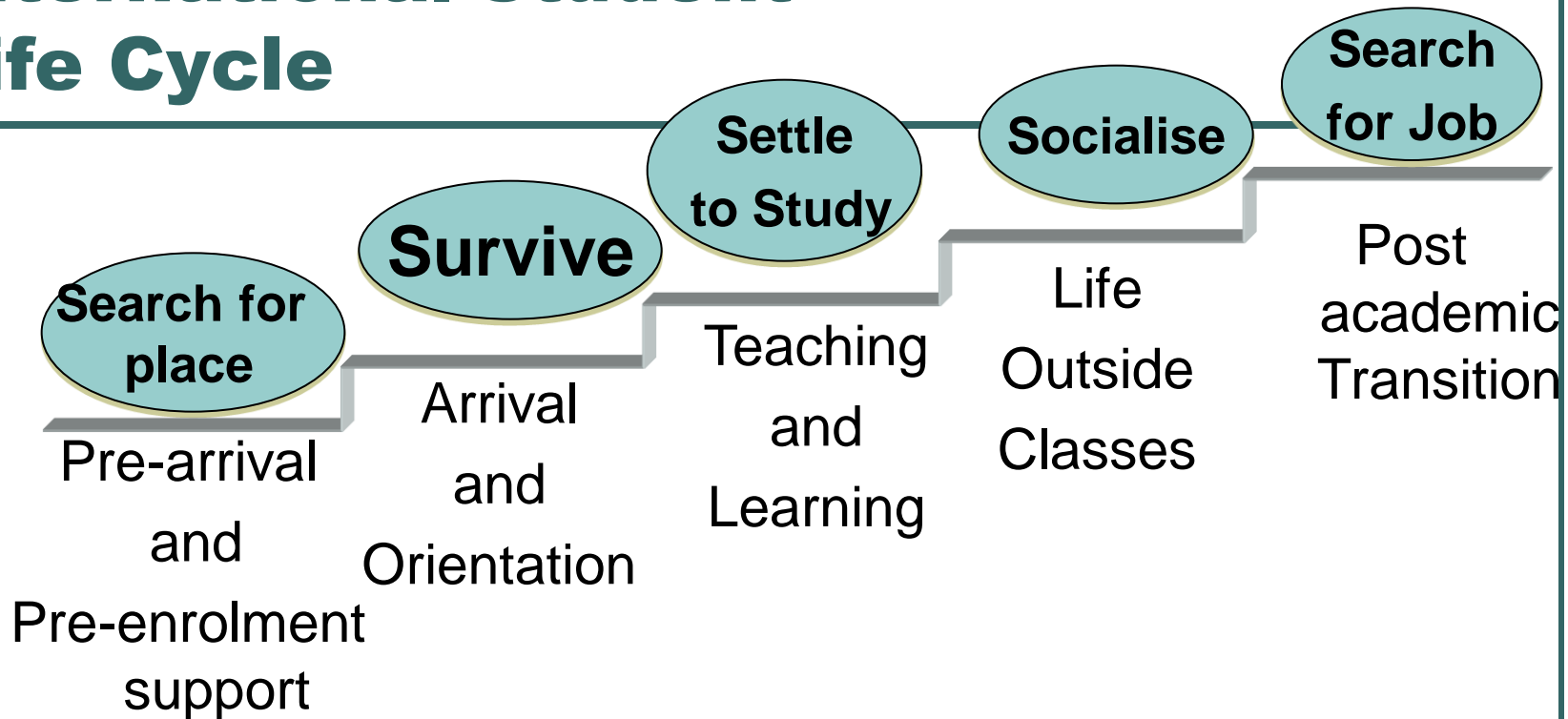
***Successful Settlement Aids  
International Relations &  
International Student  
Success***

A Workshop Facilitated by  
Sylvia Hooker & Terry  
McGrath

***Successful Settlement Aids  
International Relations &  
International Student Success***



# International Student Life Cycle



- **At each step in the cycle support is needed to make a successful transition to the next step**
- **Intervention programmes should be designed with the next step and any subsequent steps in mind**

# International Student Life Cycle

---



# Social Cohesion & Successful Settlement

---

- Jane Jensen (1998)
  - Belonging
  - Participation
  - Inclusion
  - Recognition
  - Legitimacy
- All dimensions of social cohesion need attention in the design of programmes to achieve success throughout the international student life cycle



# Applying Jensen's Dimensions in the International Student Cycle

---

- Belonging
- Participation
- Inclusion
- Recognition
- Legitimacy
- Arrival & Orientation
- Teaching and Learning
- Living



# A - Aims

---

- Orientation – to welcome new students
  - Belonging, inclusion
- Teaching & Learning – to enable international students in class to participate
  - Participation, inclusion
- Living – to help overcome homesickness
  - Belonging, recognition



# A - Aims

## International Student Life Cycle

---

Pre-arrival

Orientation

Learning

Living

PAT

# B – Buy in, Barriers & Bridges

## ● Buy in

---


- Who in your campus needs buy in to activities for enhancing social cohesion throughout the international student life cycle.
- What evidence might be needed to convince them?

## ● Barriers

- Who are barrier people?
- What other barriers exist to social cohesion?

## ● Bridges

- Identify bridges to social cohesion



Handout sheet on personal Barriers to break and bridges to build



## C- Connections & Coordination

- What Connections need to be made to enhance social cohesiveness?
  - Relationship between steps in international life cycle – eg orientation and a good start in teaching and learning
  - Implanting of advance organisers at an earlier step – eg what is implanted during teaching and learning and life outside of class that aids post academic transition? - **handout employment assistance**
- How will those connections and connector people be coordinated?

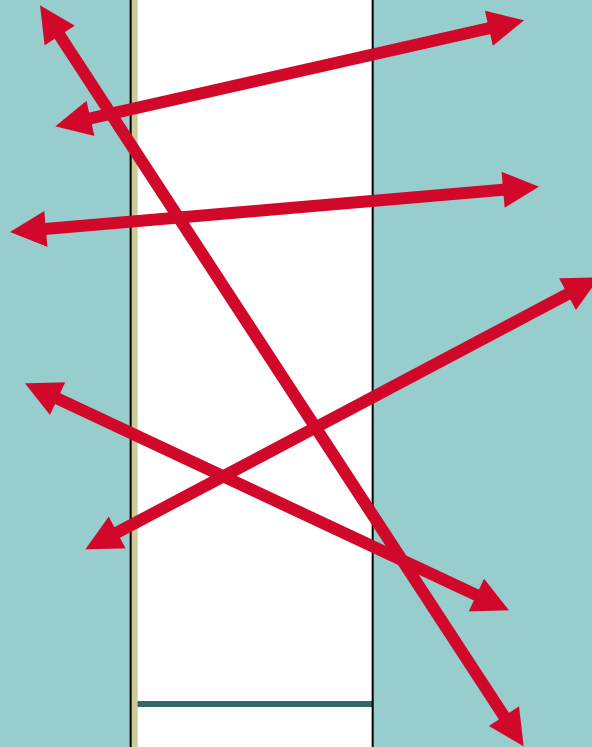
# C- Connections & Coordination



# C- Connections & Coordination

## ● Connections

## ● Coordination



## D – Dots to Join

- Planning a programme across the whole international student life cycle that gives attention to all dimensions of social cohesion involves:
  - Joining up the five parts
  - Giving attention to the transitions between parts
  - Ensuring advance organisers are implanted
  - Asking the social cohesion questions of each activity within each part and each transition
    - How does this enhance belonging and reduce isolation?
    - Is participation & involvement encouraged and made easy?
    - Are the activities of the programme inclusive or exclusive?
    - Will this activity enhance recognition or rejection of all students including internationals?
    - How will this build trust & confidence in the University/school and build to legitimise all students including internationals

# D – Dots to Join

---

- Use sound planning to design a programme
- Devices that may be helpful
  - Critical path analysis, brain storming
  - Gantt Charts, list reduction, check sheets
- Six Step
  - Identify & prioritise aims
  - Analyse: eg buy in, barriers, bridges, connections, coordination
  - Generate possible options
  - Select and plan
  - Implement
  - Evaluate

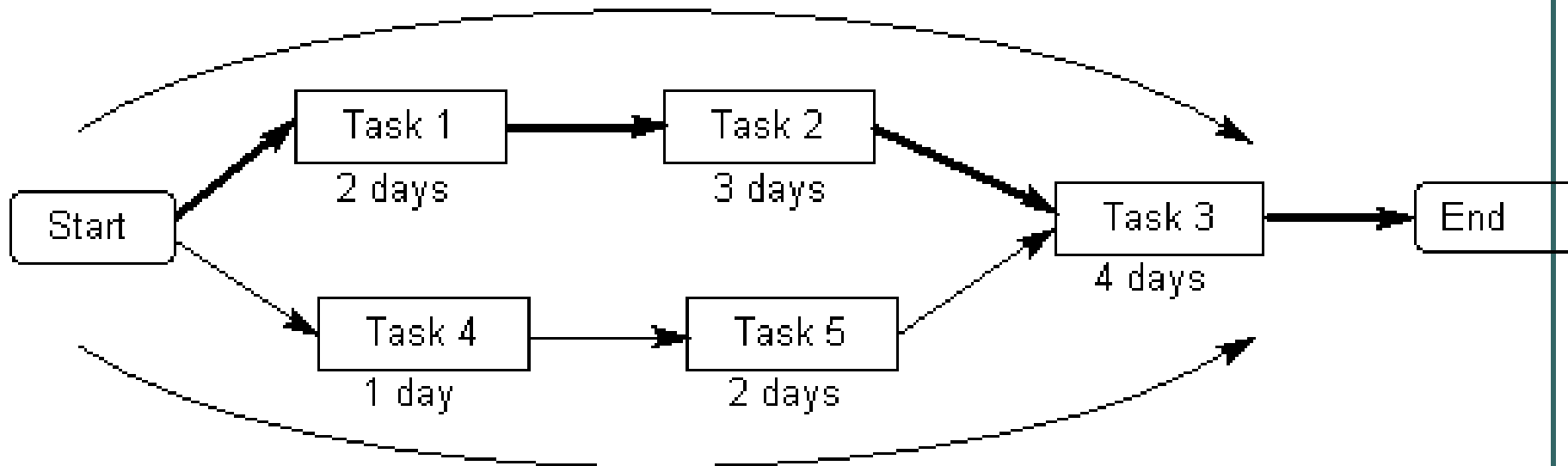


# D – Dots to Join

## Critical Path

---

*Critical path is the longest path = 9 days*

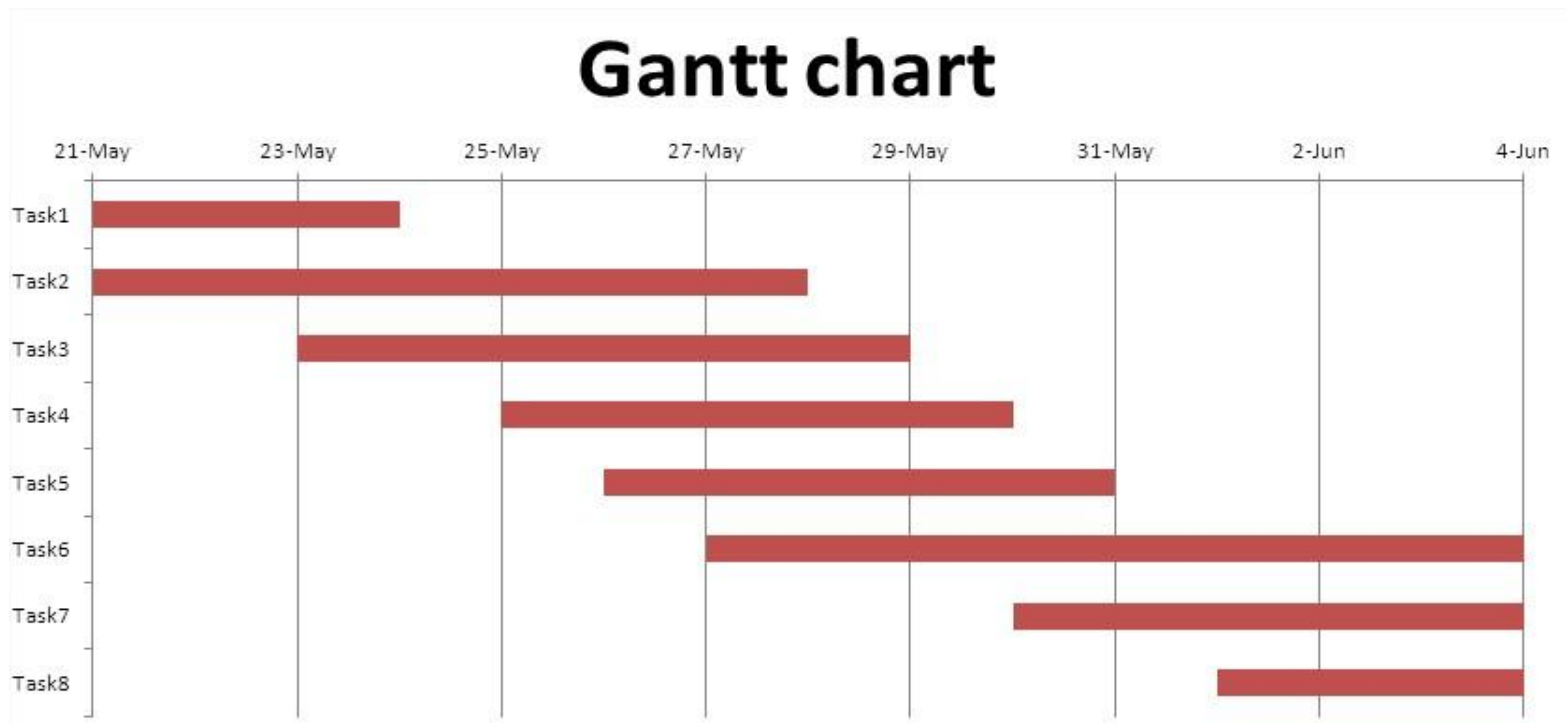


*This path is 7 days*

*Task 4 or Task 5 could, between them, start or finish up to 2 days late without delaying the end of the project. This path thus has 2 days slack in it.*

# D – Dots to Join

---



# Successful Settlement Aids

## International Relations & International Student Success

---

- Give attention to social cohesion throughout the international student cycle
- Take care in assisting transitions
- Prepare students well for transition (advance organisers)
- Plan programmes, coordinate connections, avoid barriers, build bridges and involve people who contribute to socially cohesive outcomes.
- Successful settlement happens when our international students become a connected socially cohesive part of our community and enjoy success in living and learning and are well prepared for their post academic transition.

